

MULTI-SHOOT SEEDING: **VOS** (Versatile Opener System)

1: CHOOSE YOUR HOLDER



610-HLD-2080*

FITS: C-SHANK



673-HLD-2080

FITS: EDGE ON,
BOURGAULT PHD**
MORRIS MAXIM EDGE ON



683-HLD-2080

FITS: MORRIS CONTOUR I



693-HLD-2080

FITS: MORRIS CONTOUR II

2: CHOOSE YOUR TIP



610-TIP-0802

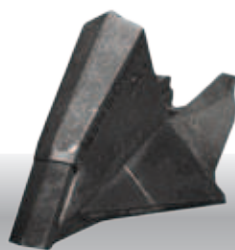
SINGLE SHOOT TIP



Overview: 3/4" (19 mm) long-wearing single shoot tip with long carbide insert on the nose for highly abrasive conditions.

Packer Recommendation:
3/4" (19 mm) or wider.

Fertilizer Options:
Used for seeding only.



610-TIP-1711 (LEFT) **1712** (RIGHT)

SIDE BAND TIP

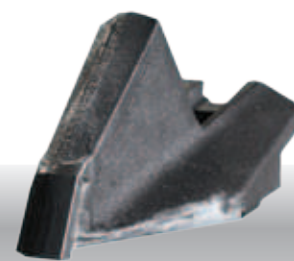


Overview: The seed is placed in a 3/4" (19 mm) band onto a firm, unfractured seedbed. Fertilizer is delivered in a band off to the side (right or left) on the same level as the seedbed.

Packer Recommendation: 2-1/4" (57 mm) or wider.

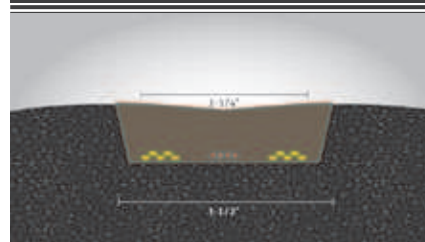
Fertilizer Options:

G Granular **L** Liquid



610-TIP-3500

PAIRED ROW TIP



Overview: 3-1/2" (89 mm) Paired Row liquid double shoot tip with 3/4" horizontal and no vertical seed/fertilizer separation.

Packer Recommendation:
3-1/2" (88.9 mm) or wider.

Fertilizer Options:

L Liquid



Drawing for illustration purposes only. All measurements shown are approximate. Results may vary with multiple factors including soil conditions, ground speed, application rates, fan speeds and more. In less than ideal conditions, mixing between seed and fertilizer may occur. For more information please refer to precautions and risk factors on page 22-23.